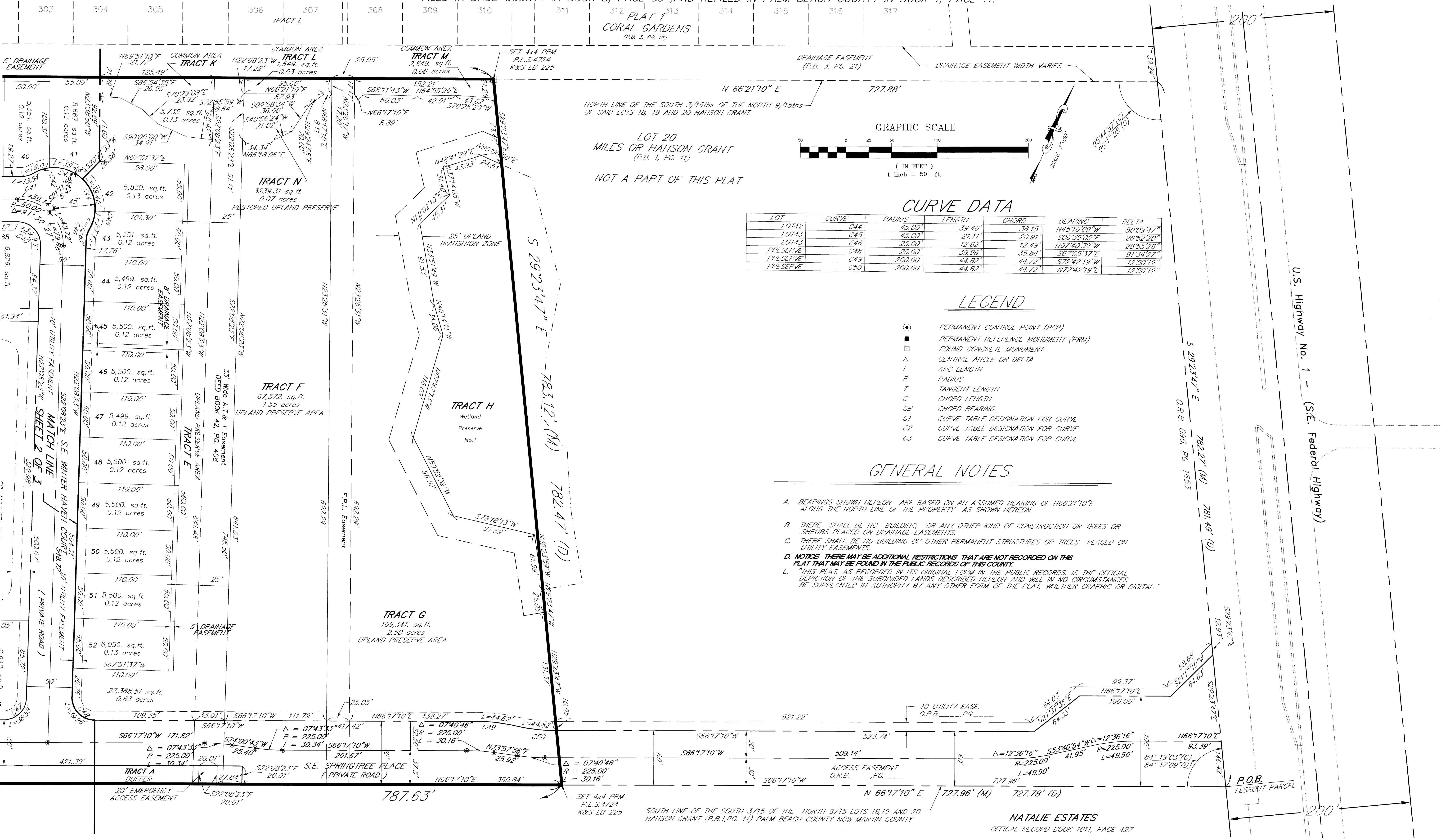


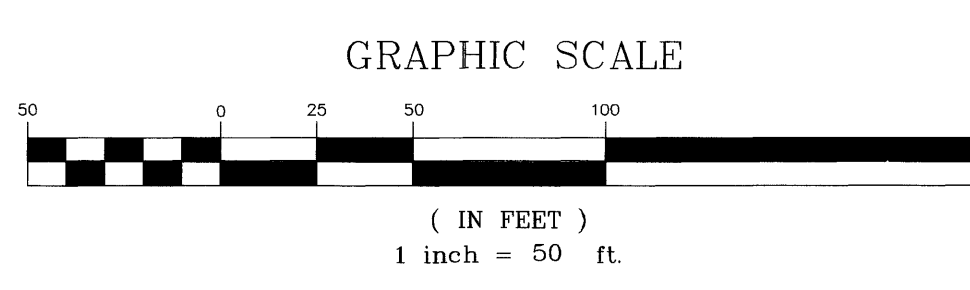
A PLAT OF SPRINGTREE

BEING A REPLAT OF A PORTION OF LOTS 18, 19 AND 20 OF HANSON GRANT
MARTIN COUNTY FLORIDA
FILED IN DADE COUNTY IN BOOK B, PAGE 59, AND REFILED IN PALM BEACH COUNTY IN BOOK 1, PAGE 11.

I, hereby certify that this plat was filed for record in Plat BK 14 page 14e, Martin County Florida.



LOT 20
MILES OR HANSON GRANT
(P.B. 1, PG. 11)
NOT A PART OF THIS PLAT



LOT	CURVE	RADIUS	LENGTH	CHORD	BEARING	DELTA
LOT42	C44	45.00'	39.40'	38.15'	N45°10'09"W	50°09'47"
LOT43	C45	45.00'	21.11'	20.91'	S06°39'05"E	26°52'20"
LOT43	C46	25.00'	12.62'	12.49'	N07°40'59"W	28°55'28"
PRESERVE	C48	25.00'	39.96'	35.84'	S67°55'37"E	91°34'27"
PRESERVE	C49	200.00'	44.82'	44.72'	S72°42'19"W	12°50'19"
PRESERVE	C50	200.00'	44.82'	44.72'	N72°42'19"E	12°50'19"

LEGEND

- PERMANENT CONTROL POINT (PCP)
- PERMANENT REFERENCE MONUMENT (PRM)
- FOUND CONCRETE MONUMENT
- △ CENTRAL ANGLE OR DELTA
- L ARC LENGTH
- R RADIUS
- T TANGENT LENGTH
- CB CHORD BEARING
- C1 CURVE TABLE DESIGNATION FOR CURVE
- C2 CURVE TABLE DESIGNATION FOR CURVE
- C3 CURVE TABLE DESIGNATION FOR CURVE

GENERAL NOTES

- A. BEARINGS SHOWN HEREON ARE BASED ON AN ASSUMED BEARING OF N66°21'10"E ALONG THE NORTH LINE OF THE PROPERTY AS SHOWN HEREON.
- B. THERE SHALL BE NO BUILDING, OR ANY OTHER KIND OF CONSTRUCTION OR TREES OR SHRUBS PLACED ON DRAINAGE EASEMENTS.
- C. THERE SHALL BE NO BUILDING OR OTHER PERMANENT STRUCTURES OR TREES PLACED ON UTILITY EASEMENTS.
- D. NOTICE: THERE MAY BE ADDITIONAL RESTRICTIONS THAT ARE NOT RECORDED ON THIS PLAT THAT MAY BE FOUND IN THE PUBLIC RECORDS OF THIS COUNTY.
- E. THIS PLAT, AS RECORDED IN ITS ORIGINAL FORM IN THE PUBLIC RECORDS, IS THE OFFICIAL DEPICTION OF THE SUBDIVIDED LANDS DESCRIBED HEREON AND WILL IN NO CIRCUMSTANCES BE SUPPLANTED IN AUTHORITY BY ANY OTHER FORM OF THE PLAT, WHETHER GRAPHIC OR DIGITAL.

Keith & Schnars, Inc.
ENGINEERS - PLANNERS - SURVEYORS

101 S.W. FLAGLER AVENUE
STUART, FLORIDA 34994
(561) 287-2626

SHEET 3 OF 3
PLAT OF
SPRINGTREE

STUART DIVISION